

4.6 Software

Pressco Technology Inc.
Cleveland, Ohio, U.S.A.



29200 Aurora Road
Cleveland, Ohio
USA 44139-1847
TEL (440) 498-2600
FAX (440) 498-9679
www.pressco.com

Enclosed is a CD with the latest **INTELLISPEC™** and **INTELLITRAINER™** software, Version 4.6. A list of features and improvements introduced in this version is included in this memo, and upgrade installation instructions are attached.

If you have any questions or need assistance, please do not hesitate to contact our Customer Service Department at (440) 498-2000.

Best regards,

A handwritten signature in black ink that reads 'Fritz Awig'.

Fritz Awig
Vice President, Customer Support Engineering
Pressco Technology Inc.

4.6 SOFTWARE



INTELLISPEC Version 4.6 Software

Category	Feature	Description
New Feature	Auto Learn Button	For RETRO-SPEC Distribution inspection Benefits: <ul style="list-style-type: none"> • Automatic inspection parameter setup
New Feature	Enhanced Forced Reject	New Options <ul style="list-style-type: none"> • Machine Part one-shot enhancement where only one machine part rejects per revolution • Reject Sample Size: Allows configuration of the rejection of the next “n” parts from user selectable machine parts (i.e. Cavity 1, Cavity 3, Cavity 5, etc) Benefits: <ul style="list-style-type: none"> • Improved troubleshooting
Inspection Enhancement	Color Mapping	For RETRO-SPEC inspections when using color camera Benefits: <ul style="list-style-type: none"> • Extends grayscale inspection capability with flexible ability to be color-specific • Improved discrimination
System Enhancement	Job and Part Selection	New smart selection Benefits: <ul style="list-style-type: none"> • Ease of use

4.6 SOFTWARE



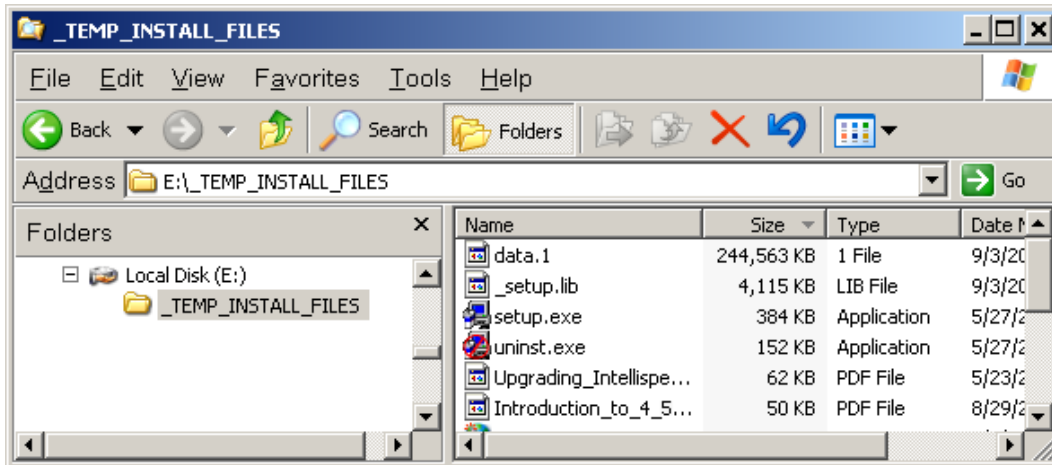
Category	Feature	Description
System Enhancement	Hardware Triggers	<p>Functions externally available via Ultra I/O:</p> <ol style="list-style-type: none"> 1. Clear correlation statistics 2. Initiate Auto-Learn (Distribution inspection) <p>Benefits:</p> <ul style="list-style-type: none"> • Remote capability • Auto-Learn procedure greatly simplified
New Inspection	Template Registration	<p>Registration and orientation based upon comparison to a saved image of that part type</p> <p>Benefits:</p> <ul style="list-style-type: none"> • Ability to register on and orient to part features not previously usable



Upgrading *INTELLISPEC* Software

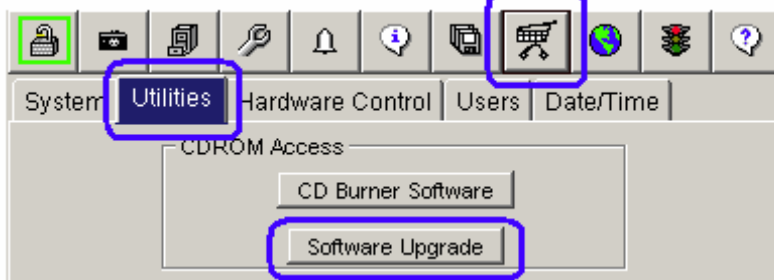
You must be an Administrator to upgrade the system.

1. Download the upgrade file.
2. Unzip the file to a temp directory on your PC and burn a CD with all the unzipped files.



*All the files shown in the right panel above should be burned onto a CD.
Important: Burn the CD with the contents in the root directory.*

3. Take the CD to the Intellispec to be upgraded. Make sure the Intellispec is operating, and offline. Log in as Administrator or higher.



4. Click the Miscellaneous toolbar button
5. Select the Utilities tab
6. Click the Software Upgrade button
7. Insert the upgrade CD and click the Yes button to start the Setup program.
8. Click the Next button and follow the prompts as the upgrade proceeds.
9. Near the end of the upgrade process, there may be a rather serious-looking message mentioning *logo verification*. Click the Continue Anyway button.
10. When the reboot prompt appears, click OK to restart but *do not remove the CD* until Windows shuts down.
11. The system will restart and run with the new version of software.
12. Some software upgrades require updating your software license key. If your upgrade won't run for this or any other reason, please contact Pressco Technical Support.