

#### 4.7 Software

Pressco Technology Inc.  
Cleveland, Ohio, U.S.A.



29200 Aurora Road  
Cleveland, Ohio  
USA 44139-1847  
TEL (440) 498-2600  
FAX (440) 498-9679  
www.pressco.com

Enclosed is a CD with the latest **INTELLISPEC™** and **INTELLITRAINER™** software, Version 4.7. A list of features and improvements introduced in this version is included in this memo, and upgrade installation instructions are attached.

If you have any questions or need assistance, please do not hesitate to contact our Customer Service Department at (440) 498-2000.

Best regards,

A handwritten signature in black ink that reads 'Fritz Awig'.

Fritz Awig  
Vice President, Customer Support Engineering  
Pressco Technology Inc.

**4.7 SOFTWARE**



## INTELLISPEC Version 4.7 Software

Category	Feature	Description
New Feature	Line Detection Filter	RETRO-SPEC Contrast Inspection filter <b>Benefits:</b> <ul style="list-style-type: none"> <li>Improved scratch detection</li> <li>Multiple sensitivity levels</li> </ul>
New Inspection	Template Match	Intelligent deco inspection <b>Benefits:</b> <ul style="list-style-type: none"> <li>Uses comparison to known good images</li> <li>Built-in template registration/orientation</li> <li>Processes color as well as grayscale images</li> </ul>
Inspection Enhancement	Dimension Logging	For RETRO-SPEC measurement <b>Benefits:</b> <ul style="list-style-type: none"> <li>Observe and track trends</li> </ul>
Inspection Enhancement	Improved Template Registration/Orientation	<b>Benefits:</b> <ul style="list-style-type: none"> <li>Speed</li> <li>Ease of use</li> </ul>
Inspection Enhancement	Auto Learn	For RETRO-SPEC Distribution inspection using a CPX module <b>Benefits:</b> <ul style="list-style-type: none"> <li>Ease of inspection adjustment</li> <li>Relearn can be triggered by operator button press, part changeover detected or total parts processed.</li> </ul>

4.7 SOFTWARE



## 4.7 Software

Pressco Technology Inc.  
Cleveland, Ohio, U.S.A.

Category	Feature	Description
Inspection Enhancement	Delta E	<p>Analysis of color quality for RETRO-SPEC Distribution inspection</p> <p><b>Benefits:</b></p> <ul style="list-style-type: none"><li>• Additional level of inspection discrimination</li><li>• Improved ability to reject bad deco</li></ul>
New Inspection	BMID	<p>Body Maker correlation inspection (supersedes AlphaNumeric Correlation for 2-piece can applications)</p> <p><b>Benefits:</b></p> <ul style="list-style-type: none"><li>• Improved accuracy (&gt; 95% possible)</li><li>• Learns patterns from pre-identified images</li><li>• Eliminates previous template set-up requirements</li><li>• Simplified interface with new Image Manager</li></ul>

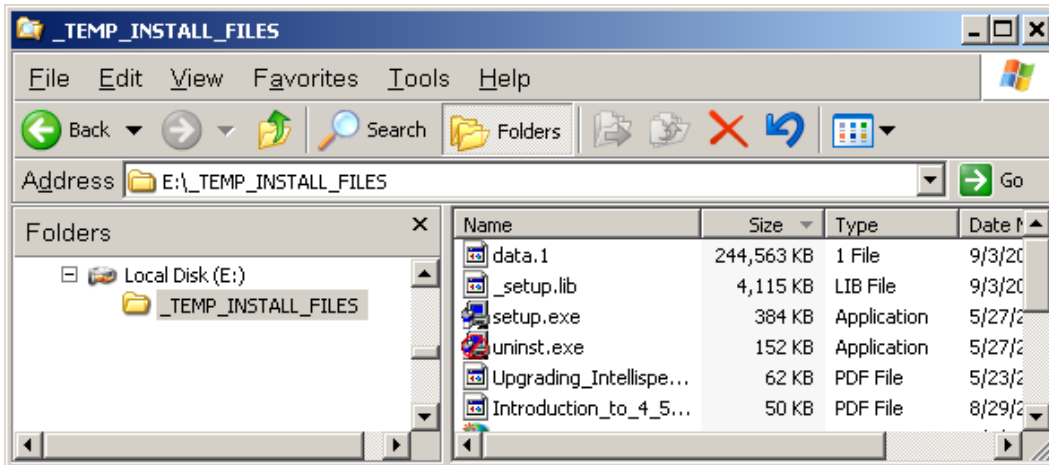
4.7 SOFTWARE



# Upgrading *INTELLISPEC* Software

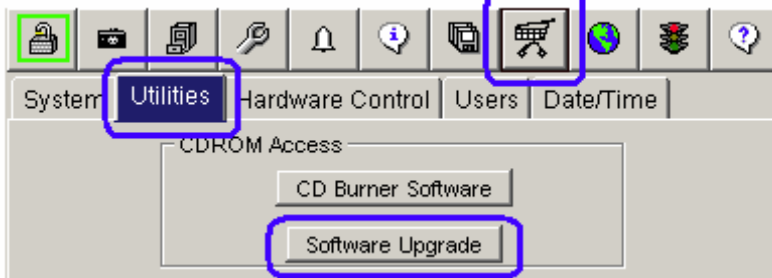
You must be an Administrator to upgrade the system.

1. Download the upgrade file.
2. Unzip the file to a temp directory on your PC and burn a CD with all the unzipped files.



All the files shown in the right panel above should be burned onto a CD.  
Important: Burn the CD with the contents in the root directory.

3. Take the CD to the Intellispec to be upgraded. Make sure the Intellispec is operating, and offline. Log in as Administrator or higher.



4. Click the Miscellaneous toolbar button
5. Select the Utilities tab
6. Click the Software Upgrade button
7. Insert the upgrade CD and click the Yes button to start the Setup program.
8. Click the Next button and follow the prompts as the upgrade proceeds.
9. Near the end of the upgrade process, there may be a rather serious-looking message mentioning *logo verification*. Click the Continue Anyway button.
10. When the reboot prompt appears, click OK to restart but *do not remove the CD* until Windows shuts down.
11. The system will restart and run with the new version of software.
12. Some software upgrades require updating your software license key. If your upgrade won't run for this or any other reason, please contact Pressco Technical Support.